

*The Rake & Hoe*  
*Garden Club of Westfield*  
PRESENTS



2018

DECK THE HALLS

*HOLIDAY HOUSE*  
*TOUR*  
*& BOUTIQUE*

SATURDAY,  
DECEMBER 1<sup>ST</sup>  
10AM - 4PM

4 HOMES DECORATED  
FOR THE HOLIDAYS AND  
FEATURING OUR  
'NATURE'S HOLIDAY ELEGANCE' BOUTIQUE

# Holiday Headquarters



**Bringing the best to  
NJ homes & gardens  
for 98 years**



WILLIAMS



NURSERY

*& The Gift House*

524 Springfield Ave • Westfield • 908-232-4076

[www.williamsnursery.com](http://www.williamsnursery.com)

**THE RAKE & HOE  
GARDEN CLUB, INC.  
OF  
WESTFIELD, NEW JERSEY**

53 Active Members  
12 Associate Members  
6 Life Members  
2 Sustainer Members  
11 Junior Members  
3 Friends  
2 National Board Members  
3 State Board Members

Member of:  
National Garden Clubs, Inc.  
Central Atlantic Region  
Garden Club of New Jersey, Inc., District V  
Organized May 1952  
Federated October 1954  
Incorporated April 2004



**SPECIAL COMMITTEE  
DECK THE HALLS HOUSE TOUR 2014**

**CO-CHAIRS: SHARON SHIRAGA AND SUSAN DINAN  
TREASURER: BETSY CHANCE**

**1 STANLEY OVAL**

Barbara Mullin, Co-Chair	Joan Kylish
Nina Sylvester, Co-Chair	Jeanette Pelikan
Tula Alhashim	Richard Pelikan
Susan D'Arecca	Joanne Womelsdorf
Irene Greenstein	Anna Daurio, Consultant

**531 BRADFORD STREET**

Clare Minick, Co-Chair	Adah Levin
Barbara Spellmeyer, Co-Chair	Paula Long
Kay Cross	Margot Partridge
Bobbi Grecco	Helen Pasterczyk
Beth Hanscom	Martha Savage
Carolyn Klinger-Keuter	

**540 HIGHLAND AVENUE**

Cathy Becker, Co-Chair	Faten Mahren
Beth Siano, Co-Chair	Mary Lou Nolas
Liz Dwyer	Jeanne Marie Ryan
Betty Gulino	Carole Smillie
Karen Jolley-Gates	Nancy Smith
Diana Kazazis	Peggy Smith

**641 ELM STREET**

Joan Barna, Co-Chair	Barbara Murphy
Alice Cowell, Co-Chair	Lena Peitsinovski
Gail Andersson	Natalie Peitsinovski
Pat Badala	Sharon Shiraga
Tracy Criscitiello	Colleen Schmidt
Diane Genco	Ethel Ward

## **BOUTIQUE**

Kris Luka, Co-Chair  
Inge Bossert, Co-Chair  
Lee Perry, Stager  
Betsy Chance  
Jane Christiani  
Kathryn Ciurczak  
Mary Foley Smith  
Pam Kolb  
Gayle Lechner

Joyce Mullen  
Marianne Murray  
Linda Parker  
Maryann Pietruski  
Carolynn Pulliam  
Betty Round  
Holly Schlobohm  
Pat Wilson

## **OUR FABULOUS HOMEOWNERS**

1 Stanley Oval: Christine and Don Ross and their family

531 Bradford Street: Theresa Hunziker and her family

540 Highland Avenue: Betsy Ferguson and her family

641 Elm Street: Sydney Sherry and her family

Scotch Plains Department of Parks & Recreation

## **PRODUCT DONORS**

Bartlett Tree Experts

Craig R. Stock Landscape Design

Hagey Landscape Contracting

Home Depot of Garwood

Meg Middleton

Theresa Gonzales

Dear Guests,

**Deck The Halls** is Rake & Hoe's gift to the town, our homeowners and our guests. It's about creating a sensory experience of the holidays and giving our guests that feeling of wide-eyed wonder and excitement they felt as children.

If everyone has a holiday muse, then you will surely find yours here! As you move through the houses on a treasure hunt of evocative holiday vignettes, we hope that moments of joy and delight turn into a journey of inspiration and your anticipation of the holidays is rewarded. Thank you for joining us!

Our **Team Members** will tell you that with hard work, passion and perseverance, anything is possible – and everything from Amaryllis to Winterberries is fair game! We roam our backyards and nurseries planning compositions and pruning nature for elements that might be “just right” in traditional design or a design inspired by the unconventional. We look forward to hearing what inspires you!

Our House Teams' designs are the story books of our four elegant homes. Working with the homes and our homeowners' treasured collections where each piece has a story to tell and reflects a fond memory, the Teams find those magical ingredients that set the themes, inspire beautiful designs composed of natural materials and make each home an unforgettable experience.

The Boutique Team has delighted in infusing winter wonder in the most elegant of ways! They have taken their cues from Mother Nature and crafted a wealth of holiday décor designs and hostess gifts just for you to discover and enjoy.

The proceeds of each Deck The Halls Holiday House Tour are used to support club operations and its numerous **Service Projects** for: Westfield Mobile Meals, The Jardine Academy, Lyons Veterans Hospital, community gardens and parks, local elementary schools and libraries, horticultural organizations, and land trusts. Certain projects have been part of our service since our founding in 1952.

Deck The Halls is truly a group effort! I would like to thank our amazing House and Boutique Teams and their co-chairs, Tour Co-chairs: Sharon Shiraga and Susan Dinan and Tour Treasurer: Betsy Chance. Hard work, passion and perseverance say it all! Our Program Sponsors and Product Donors also work behind the scenes and contribute tremendously to making this event happen – you are great partners. Our print media design team at Sir Speedy of Westfield, Barbara and Jim Murphy, make this program and all of our other collateral eye catching!

Finally, we all wholeheartedly thank our wonderful **Families** who opened their homes, hearths and hearts to us. Your generosity and graciousness are so greatly appreciated! We wish you all many more happy holidays in your elegant homes.

WHAT'S THE BEST HOUSE? The one where guests break into grins of contentment and twinkles appear in their eyes!  
**Enjoy Deck The Halls 2018!**

Pat Wilson, President  
The Rake & Hoe Garden Club of Westfield

Please do not take  
any pictures  
inside the houses.  
Thank you very much.

# IDEAS TO TRY AT HOME

## HOUSE # 1

---

---

---

## HOUSE # 2

---

---

---

## HOUSE # 3

---

---

---

## HOUSE # 4

---

---

---

## BOUTIQUE

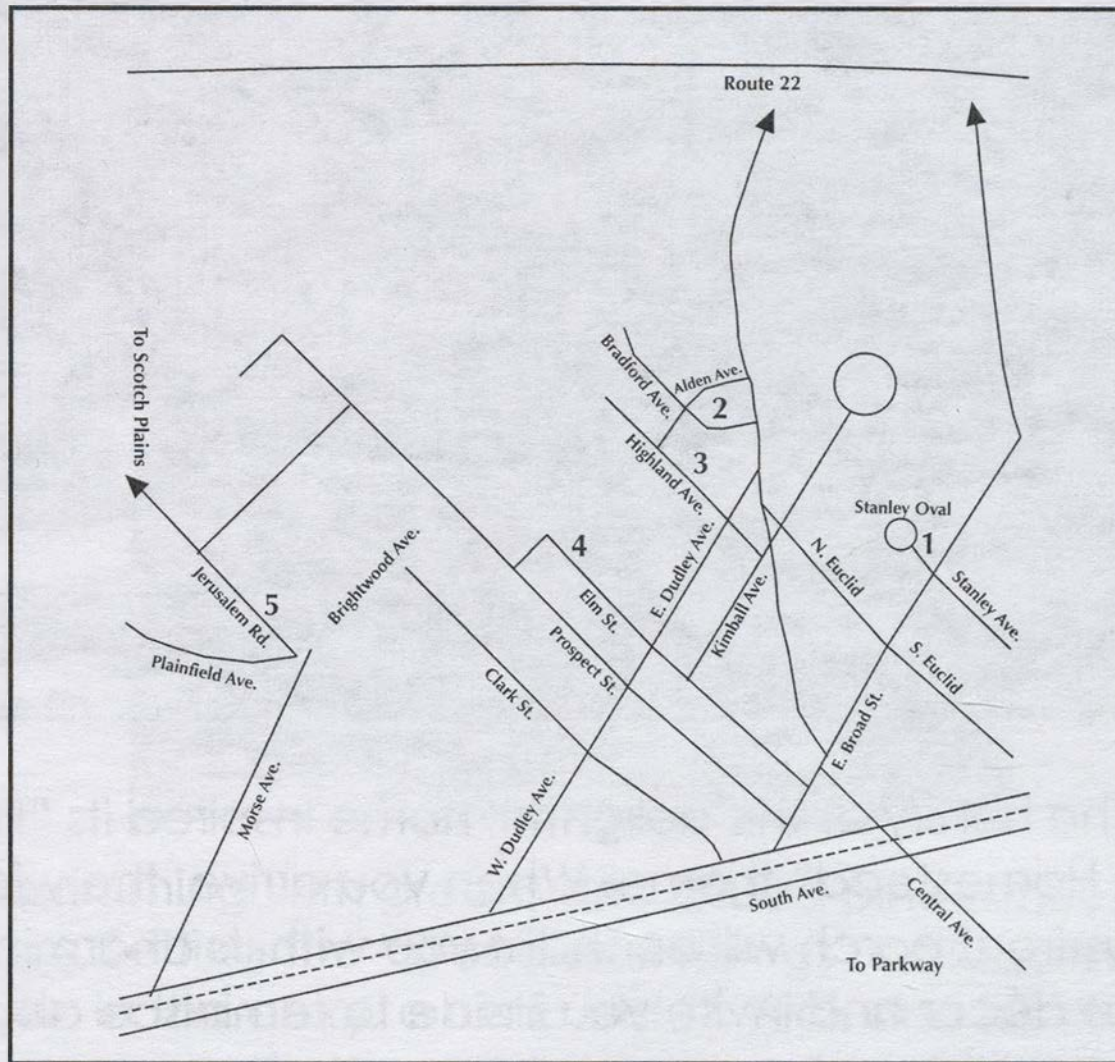
---

---

---



# 4 HOMES DECORATED FOR THE HOLIDAYS AND FEATURING OUR "NATURE'S HOLIDAY ELEGANCE" BOUTIQUE



- 1 1 Stanley Oval
- 2 531 Bradford Street
- 3 540 Highland Avenue
- 4 641 Elm Street
- 5 Boutique - Scotch Hills Country Club  
820 Jerusalem Road  
Scotch Plains

The Boutique and Houses May Be  
Visited in any order.

# #1 – 1 STANLEY OVAL

“FAMILY HOLIDAY HOMESTEAD”



The history of this delightful home inspired its “Family Holiday Homestead” theme. When you arrive, the wide and spacious front porch will enchant you with its charming and winsome décor and invite you inside to reminisce about your family’s traditions.

It’s easy to imagine cozy family gatherings in the kitchen and family room while the formal dining and living rooms will impress you with their sophistication. Make sure to find the gingerbread carousel in the kitchen – good enough to eat!

A smile will most certainly cross your face as you delight in the abundance of children’s toys on the welcoming wreath, nutcrackers marching up the stairs and the Christmas trees bedecked with handcrafted ornaments made from classic children’s toys. A whimsical toy truck adorned with holiday blooms is featured in the family room. This home surely will bring back childhood holiday memories and the warmth of simpler times.

## #2 – 531 BRADFORD AVENUE

“WOODLAND TIDINGS”



Pots brimming with greens and gilded pinecones hug the front steps, setting the “Woodland Tidings” holiday theme for this house. In the entry, a rustic old St. Nick and his companion fox greet guests. Vines and greens intertwined with lime and cranberry ribbon adorn the staircase.

Woodland turns to elegance in the living room where the mantel features an asymmetrical design of burgundy amaryllis, greens, berries, and candles. Nestling in the living room is a grapevine swan overflowing with flowers keeping company with our pianist, Carolyn, serenading us with Christmas carols.

Handmade stockings stuffed with flowers introduce the den, which is decked out in grapevine wreaths and handmade pillows. The elegant woodland theme flows into the dining room with European-influenced floral arrangements. In the kitchen, dinnerware is set amidst a forest of birch and pine on an embroidered runner of Nordic design. Hand-crafted “Tomte Nisse,” Scandinavian forest gnomes, wish us good luck in the coming year. Finally, in the family room, Santa keeps watch over a Christmas tree with handmade birds, handcrafted birdhouses and gilded balls nestled within its boughs.

## #3 – 540 HIGHLAND AVENUE

“FROM FARM TO CITY CHRISTMAS”



“From Farm to City Christmas,” the theme of this bright and cheery home, reflects the origins of our homeowner who grew up on a Midwestern farm. As guests approach this spacious home, they will find themselves greeted along the walkway by metallic farm animals decked out for the holidays in sprigs of greenery.

The country Christmas continues with the family room tree decorated with hand-stitched farm animals. In the kitchen, a homemade gingerbread farmhouse sits on the island tempting all who walk by. The Hoosier cabinet, a family heirloom, is adorned with a small tree made of branches and berries. The library’s hot pink desk will feature an unusual centerpiece made to look like plants growing from a book – what story is it telling? The dining room focal point is sure to be the table with its unique table runner fashioned from burlap, greens and flowers with napkins folded in the shape of miniature Christmas trees. Finally, a more sophisticated tone will be struck in the living room where topiaries will flank the fireplace and white and gold ornaments will sparkle on a tabletop tree, providing just enough “city glitz” to complete our journey “From Farm to City.”

## #4 - 641 ELM STREET "MAGNOLIA CHRISTMAS"



Magnolia leaves adorning the outside lamp post introduce our home's theme. As you arrive at the front door, you are greeted by "Maggie," a mannequin wearing her greens and inviting you to step inside and enjoy a "Magnolia Christmas."

As you enter the formal living room, take in the Christmas tree decorated with magnolia and pinecone ornaments providing Christmas spirit to the delightful fairies and their fairie houses snuggled among the branches. As you move into the dining room, discover the magnolia leaf placemats showcasing the place settings for the family's holiday meal. In the kitchen, observe the clever use of magnolia leaves, winter greens and kumquats in the arrangements and window treatments to interpret the teal, orange and lime color scheme.

The family room tree is a delight for young and old with hand-strung popcorn garlands, candy icicles and everyone's favorite Christmas treats – candy canes! They are the perfect complement to the homeowner's cherished Nutcracker and Santa Claus collections so lovingly displayed. The mudroom focuses on the family's three large dogs (Truly, Juno and Brody) featuring their own tree decorated with dog biscuits and apple-cinnamon ornaments. Whimsical dog wreaths adorn the closet doors while dog floral arrangements recline on the bench. As you exit this charming home, please waive farewell to the Swedish gnomes standing guard in the back yard!

**#5 – BOUTIQUE**  
**SCOTCH HILLS COUNTRY CLUB**  
820 Jerusalem Road  
Scotch Plains

**"Nature's Holiday Elegance Boutique"**

The Boutique showcases "Nature's Holiday Elegance," featuring original items crafted from natural materials and adorned in holiday style. Some of the many exclusive items offered at this year's boutique include topiaries, wreaths, ornaments, and holiday designs that incorporate plant materials found in our gardens, such as seed pods, leaves, wood and bark, moss, ferns, and a variety of dried legumes, nuts and pine cones. Touches of gilding and glitter add sparkle to the holiday spirit.

Returning guest favorites include: pressed fern note cards and gift tags, note cards showcasing members' original photography, decorative tins, hand-painted gourd birdhouses, and amaryllis bulbs already to go in their decorative holiday containers.

Of course, don't forget to pick up fresh greens and arrangements for your holiday decorating. A wide variety of wreaths, swags, planters, topiaries, and bundled greens will make your visit to "Nature's Holiday Elegance" well worth your time.

The Boutique's items are sure to please a variety of tastes and budgets and become beautiful items for your home and to give to your friends! Take a breather and enjoy some homemade light refreshments at the Nature's Bounty Cafe. If you have read our *Well-Seasoned* cookbook, you'll know that your sweet tooth is in for a treat!

GUIDING  
CUSTOMERS  
IN THE  
RIGHT  
DIRECTION  
FOR OVER  
75 YEARS



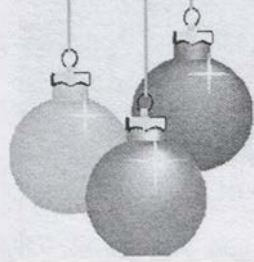
HOBOKEN (main office)  
621 Washington St.  
(201) 659-3600  
BERKELEY HEIGHTS  
555 Springfield Ave. • (908) 790-0770  
LIVINGSTON  
1 West Mount Pleasant Ave.  
(corner of Rt. 10 and South Livingston Ave.)  
(973) 597-1930  
MADISON  
177 Main St. • (973) 360-0080

SECAUCUS  
1234 Paterson Plank Rd. • (201) 863-7405  
SUMMIT  
385 Springfield Ave. • (908) 522-0090  
UPPER MONTCLAIR  
201 Bellevue Ave. • (973) 509-1316  
(Free on-site parking)  
WESTFIELD  
184 Elm St. • (908) 518-9800  
WESTWOOD  
301 Center Ave. • (201) 664-6030

Visit our website: [www.havenbank.com](http://www.havenbank.com)



*Wishing you a  
Happy Holiday  
and a Bright  
New Year!*



*KENNETH W.  
ARIDA, DDS*

131 S. EUCLID AVENUE  
WESTFIELD, NJ 07090  
908-654-6262  
DRARIDA.COM

**CHRISTOFFERS**

EST. 1976



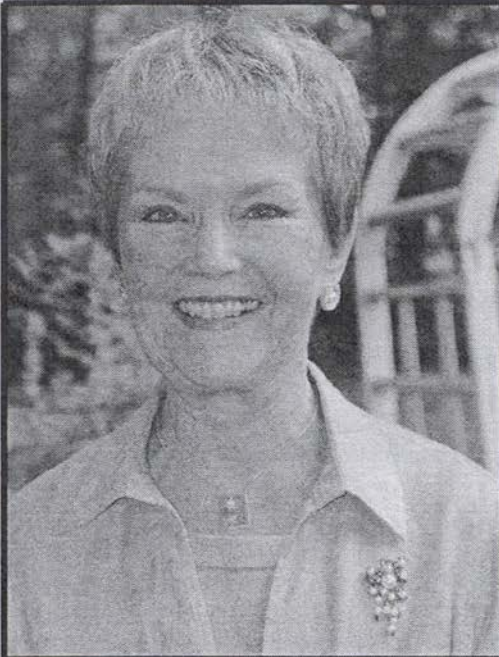
FLOWERS  
& GIFTS

MOUNTAINSIDE, NEW JERSEY

[christoffersflowers860@gmail.com](mailto:christoffersflowers860@gmail.com)







## SUSAN E. DINAN SRES®



209 Central Avenue  
Westfield, NJ 07090  
Cell (908) 400.3918  
E-Fax 862.345.2825



susan.dinan@cbmoves.com  
www.susandinan.com  
sedinan61@gmail.com

*#1 Coldwell Banker Residential Brokerage Office  
Among more than  
800 Coldwell Banker NRT Offices Nationwide*

# HAGEY



LANDSCAPE CONTRACTING INC.

*A Landscape Design, Development & Management Co.*

908.654.5753

## **Sir Speedy**®

**PRINT | SIGNS | MARKETING**

*Congratulations  
on a wonderful tour!*

**Jim and Barbara Murphy**

516 North Avenue East, Westfield, NJ  
908.232.1001

www.sirspeedywestfield.com  
print@sirspeedywestfield.com



**ADAH LEVIN, MA**

Sales Associate

NJAR® Circle of Excellence 1997, 99-2004, 2007

(908) 233-5555 BUSINESS

(908) 301-2024 DIRECT

(908) 337-6743 CELL

(862) 345-2784 EFAX



RESIDENTIAL BROKERAGE

209 Central Avenue

Westfield, NJ 07090

[adahh@aol.com](mailto:adahh@aol.com)

Operated by a subsidiary of NRT LLC.

## The Flower Shop

(908) 233-5413

1120 South Ave West

Westfield NJ 07090

[theflowershopnj.com](http://theflowershopnj.com)  
[theflowershopnj@gmail.com](mailto:theflowershopnj@gmail.com)

---

“A SMALL CONFESSION: If a woman can be a Peeping Tom, then I am one. *But only at Christmastime.* When tree lights begin to sparkle inside my neighbors' homes, I can't resist looking in on their holidays, their way of dressing up for the most colorful and joyous season of the year...”

Rose Bennett Gilbert, syndicated design columnist

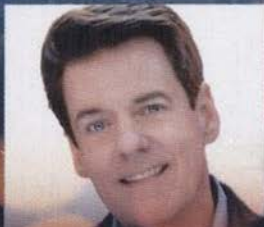
“Our hearts grow tender with childhood memories and love of kindred, and we are better throughout the year for having, in spirit, become a child again at Christmastime.”

Laura Ingalls Wilder

CELEBRATE THE HOLIDAYS

WITH  NEW JERSEY  
FESTIVAL ORCHESTRA

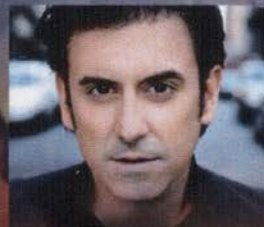
## RETURN OF THE THREE HOLIDAY TENORS



**JOHN  
EASTERLIN**



**NELSON  
EBO**



**BRIAN  
CHANEY**

*Met.Opera's John Easterlin and friends join NJFO to present a dazzling selection of renowned tenor fare and wintertime favorites to welcome in the holidays.*

**Saturday, December 15, 2018 at 7pm** THE PRESBYTERIAN CHURCH, WESTFIELD

**Sunday, December 16, 2018 at 3 pm** ST. PETER'S CHURCH, MORRISTOWN

## SINGIN' AND DANCIN' WITH THE STARS



*New Year's Eve*

*Dance Theatre of Harlem's Da'von Doane and friends join our Broadway vocalists to recreate the magic of MGM musicals and more.*

**Monday, December 31, 2018 at 7pm - 9pm**

WESTFIELD HIGH SCHOOL AUDITORIUM, WESTFIELD

BUY TICKETS ONLINE AT  
**WWW.NJFESTIVALORCHESTRA.ORG**  
OR CALL (908) 232-9400

# White Birch

Since 1992



LANDSCAPE CONT.



Full Service Landscape • Licensed & Fully Insured

- Professional Lawn Maintenance
- Residential/Commercial
- Landscape Design
- Seed & Sod
- Planting/Shrub Installation
- Mulching
- Fence Installation
- Brick Pavers/Patios
- Retaining Walls
- Underground Leader Drains & Grading
- Belgium Block
- Snowplowing



**When Quality Counts**

Call Today **908-486-3138**